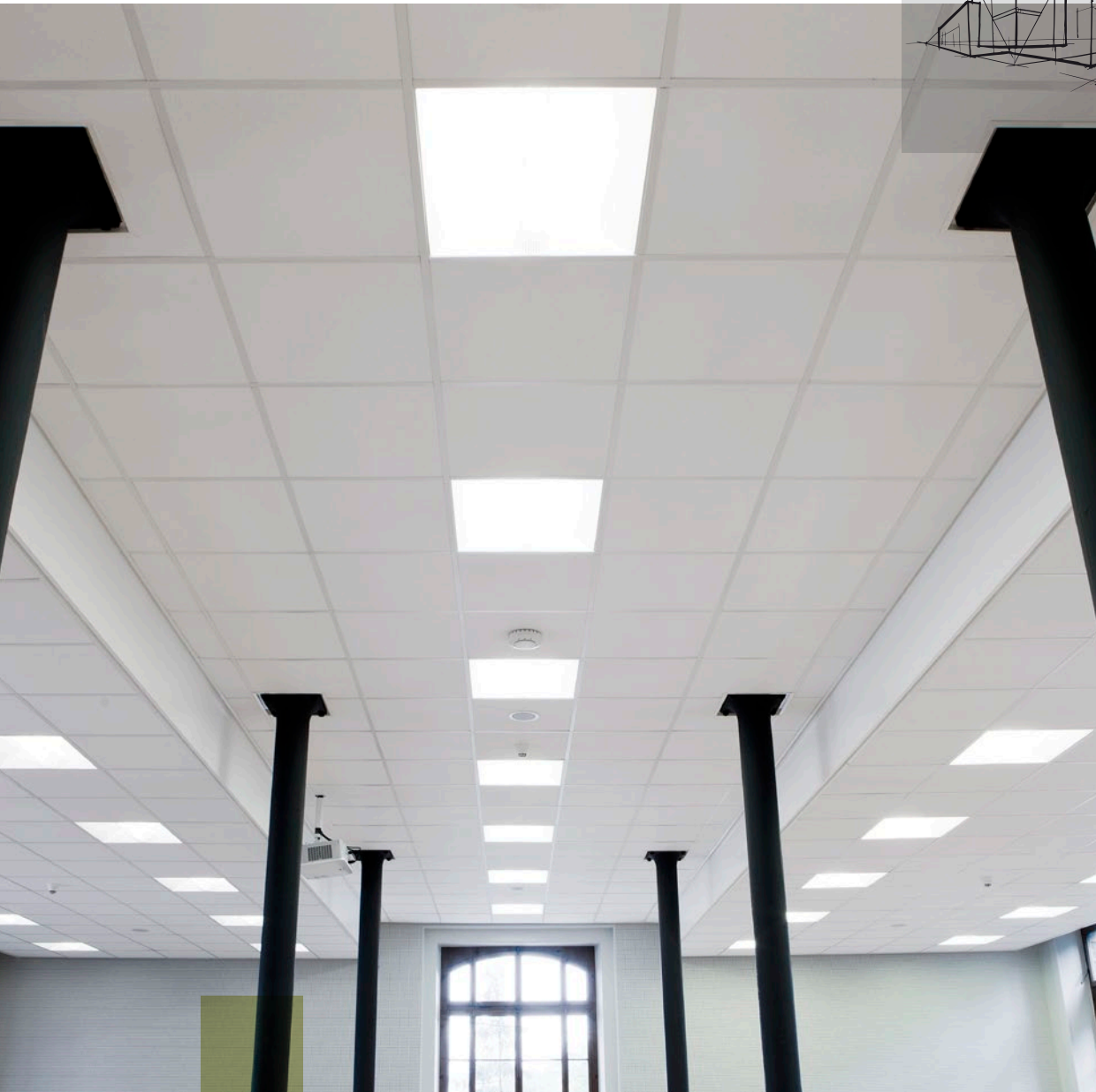
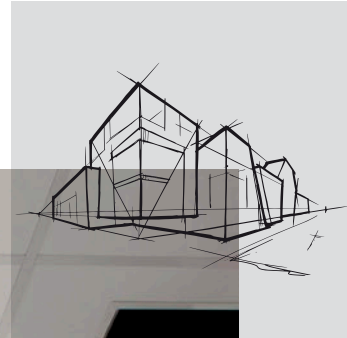


Rockfon[®] Pacific[™]

Datasheet



Rockfon® Pacific™



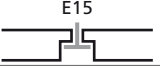

- Economical tile with standard surface
- Class B sound absorption with lightweight 12mm thickness
- Basic range of tile dimensions in semi-concealed and visible grid options
- Easy to clean with a vacuum

Product Description

- Stone wool tile
- Visible side: Nuanced white painted fleece
- Rear Side: back fleece

Application Areas

- Office
- Retail

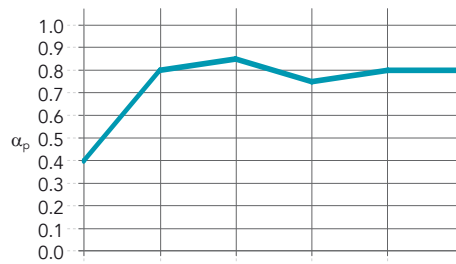
Edge detail	Module size (mm)	Approximate weight (kg/m ²)	Recommended installation System
 A15	600 x 600 x 12	1,6	Chicago Metallic™ T15 4070
	1200 x 600 x 12	1,6	Chicago Metallic™ T15 4070
 A24	600 x 600 x 12	1,6	Chicago Metallic™ T24 3220
		1,6	Chicago Metallic™ T24 1920
	1200 x 600 x 12	1,6	Chicago Metallic™ T24 3220
		1,6	Chicago Metallic™ T24 1920
 E15	600 x 600 x 12	1,9	Chicago Metallic™ T15 4070
 E24	600 x 600 x 12	1,9	Chicago Metallic™ T24 3220
		1,9	Chicago Metallic™ T24 1920



Performance



Sound absorption
 α_w : 0.80 (Class B)



Thickness (mm) /
 Suspension (incl. tile - mm)

	125 Hz	250 Hz	500 Hz	1000 Hz	2000 Hz	4000 Hz	α_w	Absorption class	NRC
12 / 200	0.40	0.80	0.85	0.75	0.80	0.80	0.80	B	0.80



Reaction to fire
 A1



Humidity and sag resistance
 Up to 100% RH.
 No visible deflection in high humidity



Cleaning
 - Vacuum



Hygiene
 Stone wool provides no sustenance to microorganisms



Environment
 Recyclable



Indoor environment
 A selection of Rockfon products have been awarded the Finnish M1 emission classification for building materials and the Danish Indoor Climate Label for low emission products



Rockfon® is a registered trademark
of the ROCKWOOL Group.

07:2020 | All colour codes mentioned are based on the NCS - Natural Colour System® property of and used on license from NCS Colour AB, Stockholm 2012 or the RAL colour standard. Subject to alterations in range and product technology without prior notice. Rockfon accepts no responsibility for printing errors.

Rockfon Singapore

ROCKWOOL Building Materials (Singapore)
Pte Ltd.
No. 8, Tuas Avenue 2
Jurong Town
Singapore 639448
Tel: (+65) 6861 4722
Fax: (+65) 6862 3533

Rockfon Malaysia

Chicago Metallic (Malaysia) Sdn Bhd
PTD 220527,
Jalan Indah Gemilang,
Taman Perindustrian Cemerlang,
81800 Ulu Tiram,
Johor, Malaysia
Tel: (+607) 863 3539
Fax: (+607) 863 1525

Rockfon Hong Kong

Rockwool Building Materials (Hong Kong) Ltd.
Unit 301-2, 3/F, Koon Wah Building,
No.2 Yuen Shun Circuit,
Yuen Chau Kok, Shatin,
N.T., Hong Kong
Tel: (+852) 2576-6117
Mobile: (+852) 9161-7924

